

Final Sustained Investigation

Grace Thunell

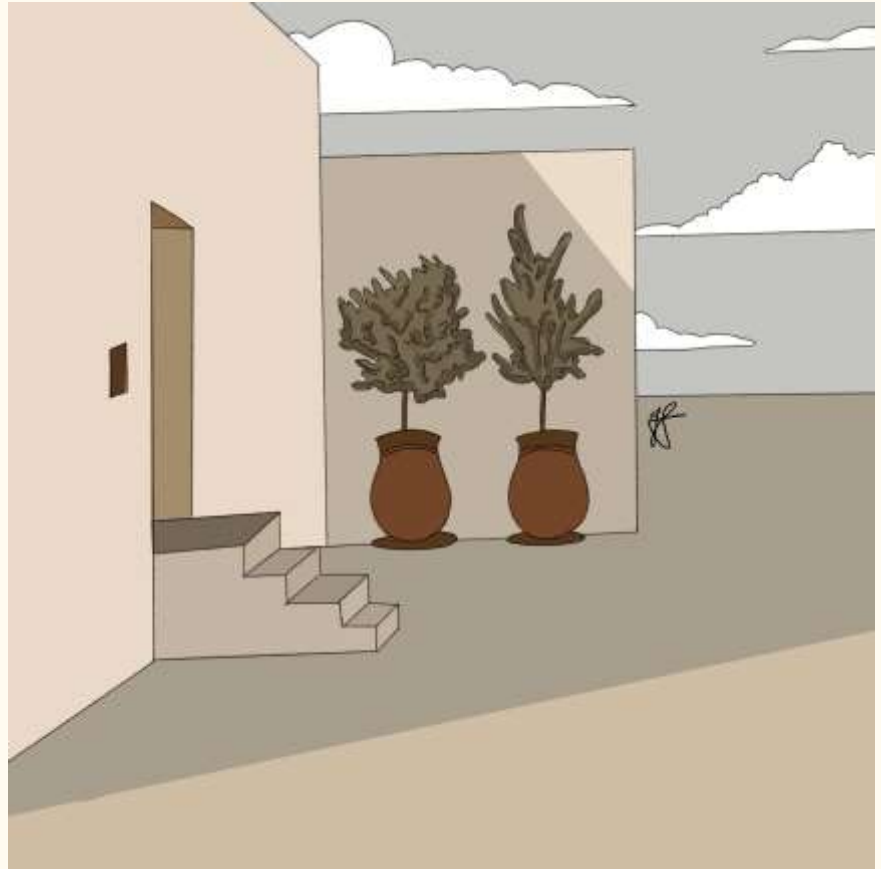
Artist Statement

I really wanted to explore the architecture from various cultures and periods of time. Most of the architecture drawings I've seen in the past are all displayed in a similar style, and my question started as, "how can I portray these older types of architecture differently?" As I explored my investigation more, my question developed into, "how can I create pieces of old architecture in a modern, innovative way?" To do this, I used copic markers, pen and ink, gold paint, white charcoal, etc. The combination of these mediums on dark paper made for a very modern, new feel to these older buildings.

The first few pieces of my investigation were quite experimental. I used a variety of styles, mediums, etc. I did closeups of distinguishable features of certain buildings, and used many different types of architecture, such as temples, mosques, and even houses. As I continued, I started finding a style that I felt fit my questions best. The piece depicting St. Basil's Cathedral best demonstrates this style. I used more modern mediums, such as copic markers with gold paint, and white charcoal and acrylic paint on toned paper to really create a clear, harsh contrast between the building and the background. These features combined created a clean, contemporary finish that satisfied my question.

Spanish Colonial Home

- Medium: Digital
- Size: 11”x 11”
- \$50.00
- I love the simplicity of Spanish Colonial architecture, so I really tried to incorporate that into my piece by using solid colors, minimal detail, and outlines.



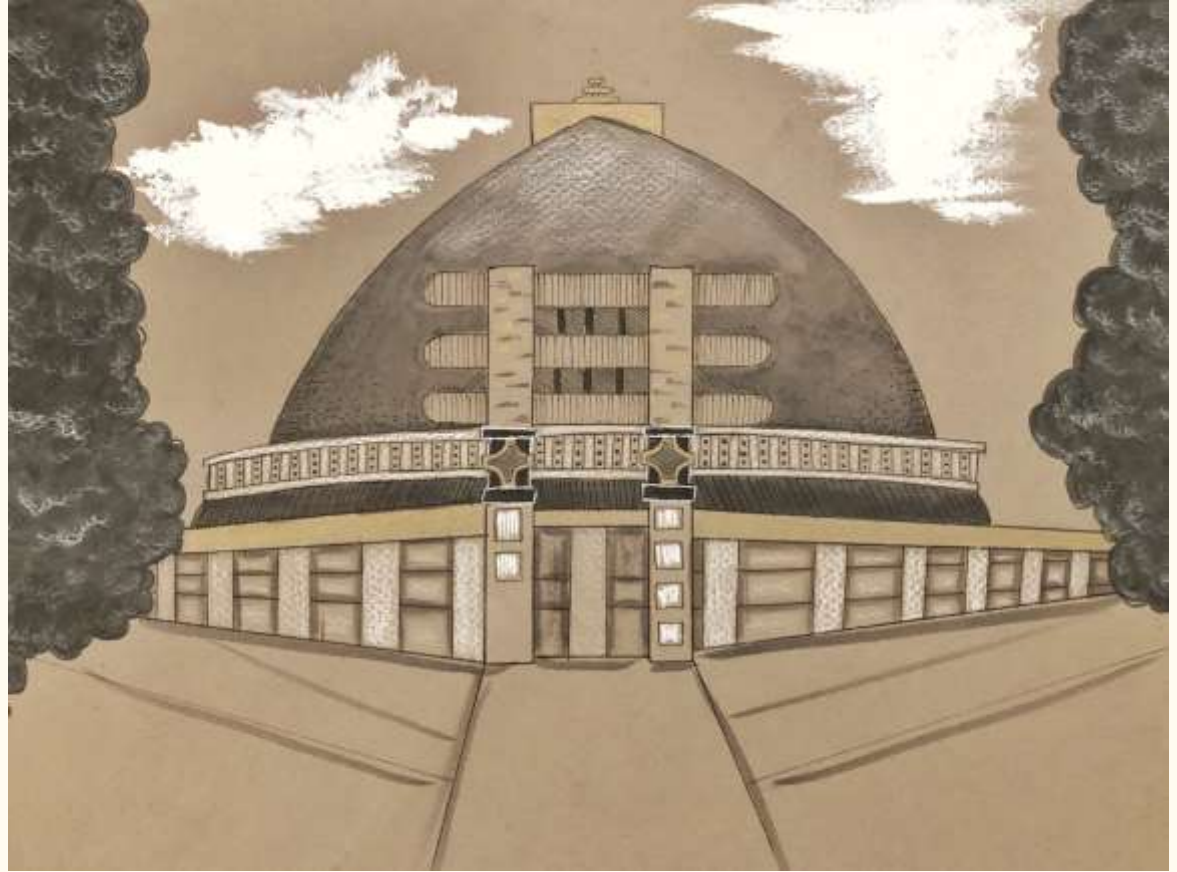
Ionic Greek Column

- Medium: Pencil, pen and ink, gold paint
- Size” 9”x 12”
- NFS
- I tried to make it seem as though an ancient, traditional form of art was being combined with a more modern style, which is why I kept the column very realistic and added the gold wreath at the bottom.



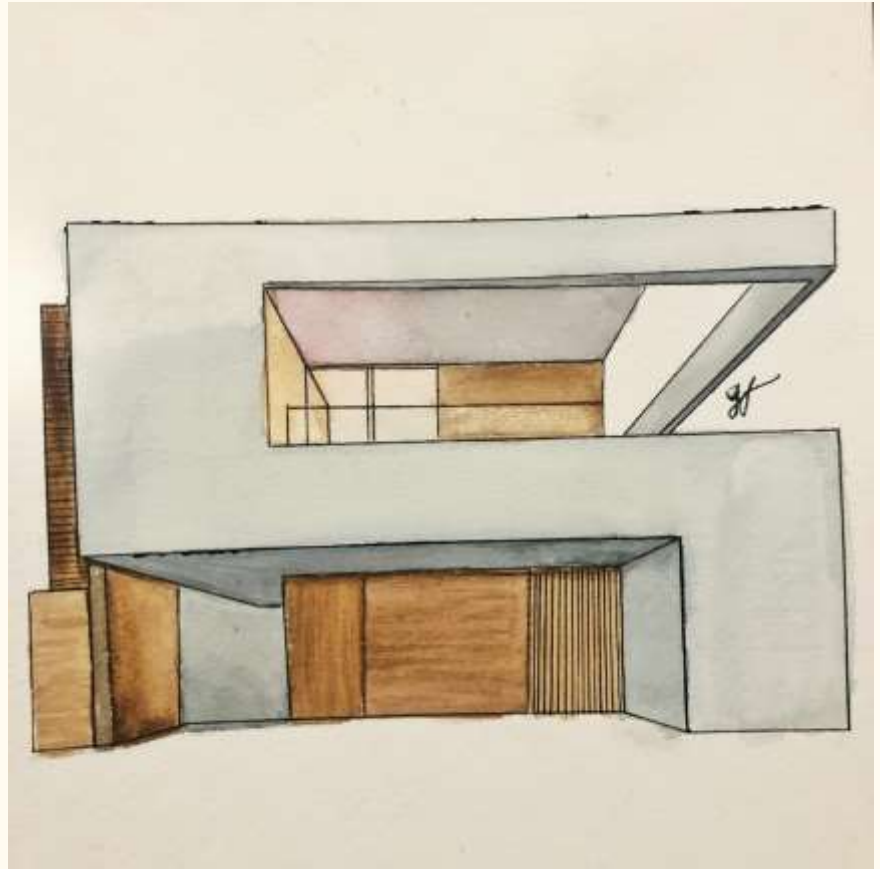
Stupa

- Medium: Pen and Ink, Copic Markers, Charcoal, Acrylic paint
- Size: 9" x 12"
- NFS
- Stupas are used to meditate/contain relics, and are sacred in Buddhism.



Modern Minimalist Home

- Medium: Watercolor, pen and ink
- Size: 8" x 8"
- \$50.00
- I created this piece to really exemplify the modern minimalist movement. There is very little detail, both in the artwork and home itself.



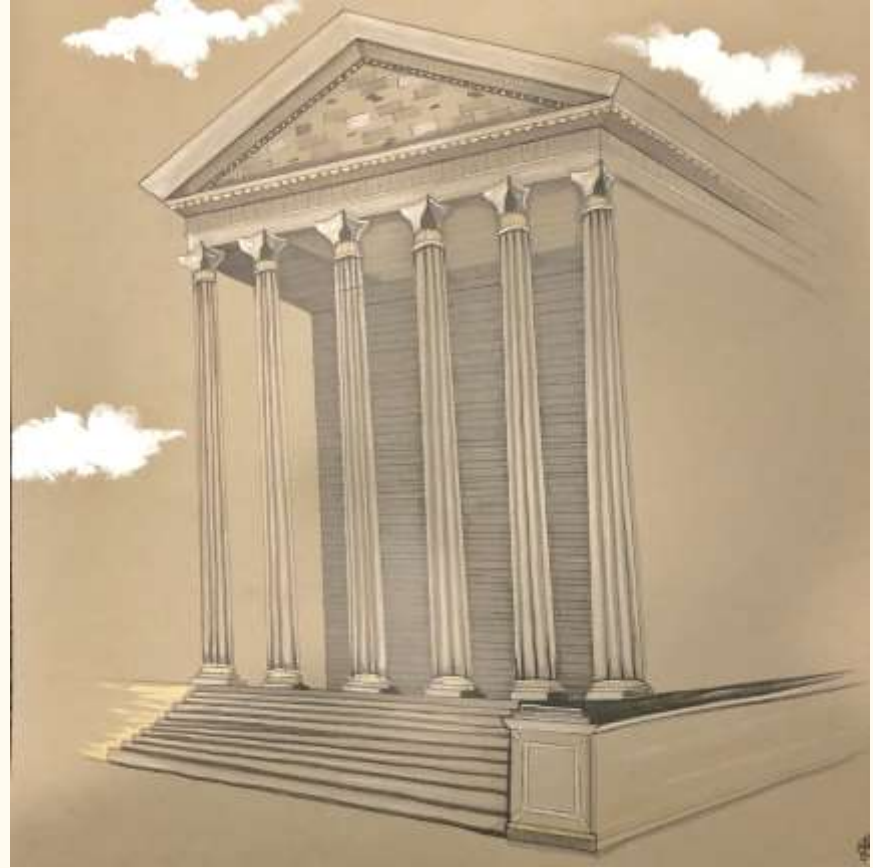
Parisian Apartments

- Medium: Pen and ink, acrylic paint
- Size: 8.5” x 11.5”
- \$75.00
- Parisian architecture has always been very interesting to me. It shows influence from many different past styles, and it all fits very well together. I used dark, solid lines to make a clear contrast between the building and the background



Classical Greek Temple

- Medium: Pen and Ink, Copic Markers, Charcoal, Acrylic paint
- Size: 20" x 20"
- \$100.00
- I tried to make this piece seem very structured to exemplify the ideals of classical architecture, while still using contrast and gold accents to make it more modern.



Al Ain Mosque

- Medium: Pen and Ink, Copic Markers, Charcoal, Acrylic paint
- Size: 12.5" x 19.5"
- \$125.00
- I started this piece by drawing and shading it completely with pencil, and then I added the Copics, pen, and black/white charcoal for added depth and contrast.



Stick Style Home

- Medium: Pen and ink, charcoal, copic markers
- Size: 8.5”x 11.5”
- \$ 75.00
- This style of home is a late 19th century American style, so I tried making it more contemporary by using sharp outlines with the pen and white charcoal.



Sheikh Zayed Grand Mosque

- Medium: Watercolor
- Size: 9” x 12”
- NFS
- I love Islamic architecture, and I wanted to really give it a sense of depth. To do this, I took out the details of the arch and kept the detail inside. This created more depth and a more modern feel to the piece.



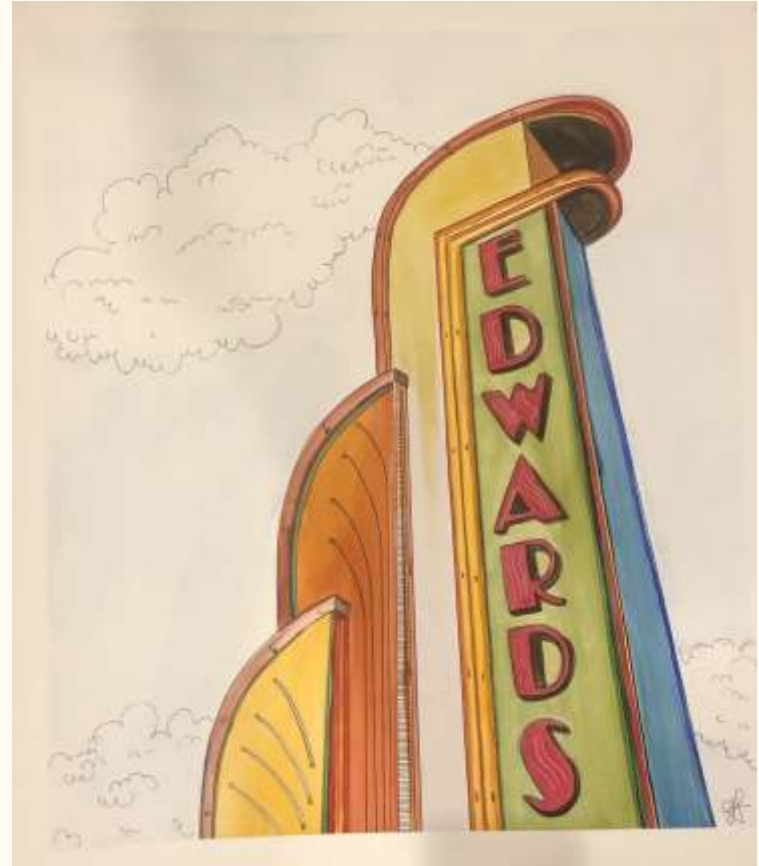
Gates of Heaven

- Medium: Pen and Ink, Copic Markers, Charcoal, Acrylic paint
- Size: 9" x 12"
- \$100.00
- This piece took a lot of layering to create the final look of the gate. There are lots of small details underneath the main/eye catching areas, and this was done with pen and white charcoal.



50s Marquee

- Medium: Watercolor and pen
- Size: 17" x 17"
- NFS
- This is my favorite piece from my sustained investigation. I love the bright colors and the illustrated look from the pen.



Amsterdam Homes

- Medium: Copic markers, pen
- Size: 24" x 18"
- \$75.00
- This style of home is very traditional in Amsterdam, so I tried adding a contemporary feel to it with the use of outlines and solid coloring.



St. Basil's Cathedral

- Medium: Pen and Ink, Copic Markers, Charcoal, Acrylic paint
- Size: 12.5”x 19.5”
- NFS
- This is the most intricate piece from my sustained investigation, and took close to 20 hours to complete. Like the Al Ain Mosque piece, I started with doing the sketching and details in pencil, and then built on top of that with pen, copic markers, and charcoal.

