

Ashlee Astin

AP Studio Art 2019-2020

I find inspiration for my pieces through music that I listen to. The work created for my portfolio is based on my visual response taken from certain songs that express certain feelings relating to the connections human beings tend to have with certain things and each other. Love and hate. Happiness and sadness. These feelings are what all of these musical compositions have in common. I have been trying to understand these feelings as I have been creating my pieces.

Each of my pieces for my portfolio use black and white mediums. Although many feelings are evoked while listening to these songs, my experimentation with black and white mediums as an easier way to connect those many feelings into one solid theme. Charcoal and pencil are the mediums used in most of my earlier works, but as my concentration progressed, I switched to ink and scratchboard to create line drawings for my later pieces. The line art pieces show more movement, which is what music does: it moves us.

She Burns

Foy Vance

Graphite on paper

9x12

“She Burns” is a love song about a woman who feels like home to a man. She creates a feeling of warmth, so I tried to create a sense of warmth in the shading.



There Is a Light That Never Goes Out

The Smiths

Charcoal on paper

11x11

I wanted this drawing to convey the romanticization of an idea of a person to reflect this song. I drew the arms in the style of a line drawing to convey the sense that the experience is not actually real, it is just an idea or romanticization of what someone wants to happen.



She's Lost Control

Joy Division

Ink on paper

6x9

This song is about a woman with epilepsy and how she has lost control of her own body during a seizure. I chose to reverse the internal and external forces and draw a woman who was in control of her body but everything outside was out of her control.



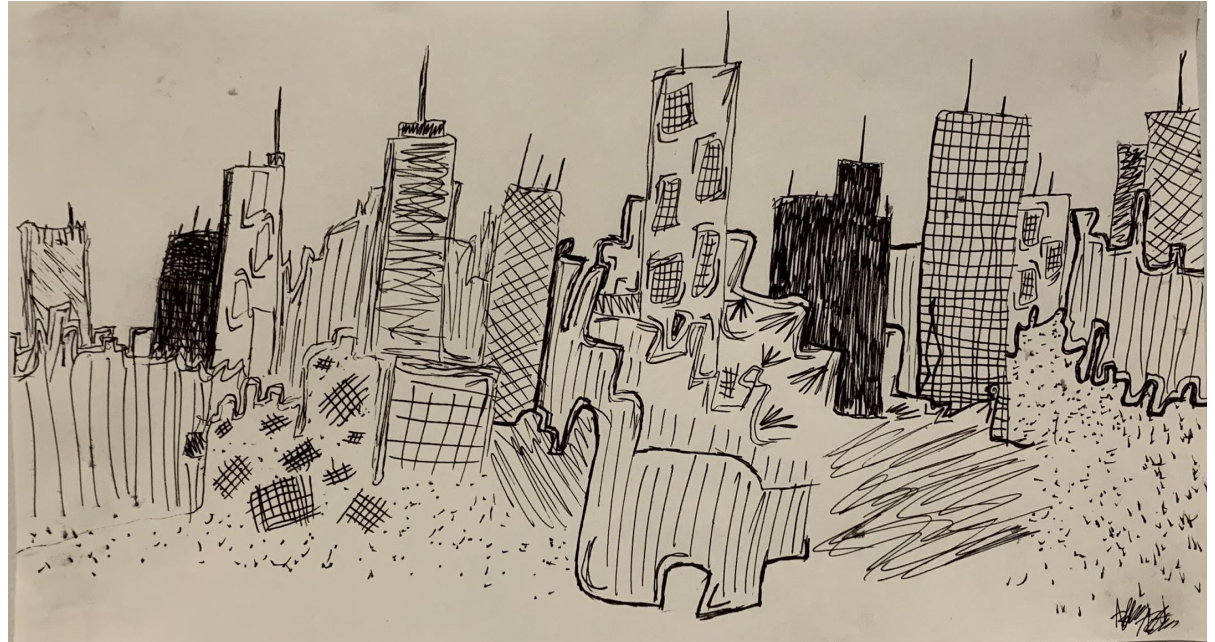
Dirty Boulevard

Lou Reed

Ink on paper

6.5x12

Lou Reed describes how horrible and **messy** city life really is. He complains about how the dirty city does not uphold the ideals it claims.



Come As You Are

Nirvana

Graphite on paper

9x12

Just the title of this song inspired this drawing. “Come as you are.” Be yourself. I drew frontman Kurt Cobain from a photo reference because he looked completely himself. He is not trying for anyone. He is just him.



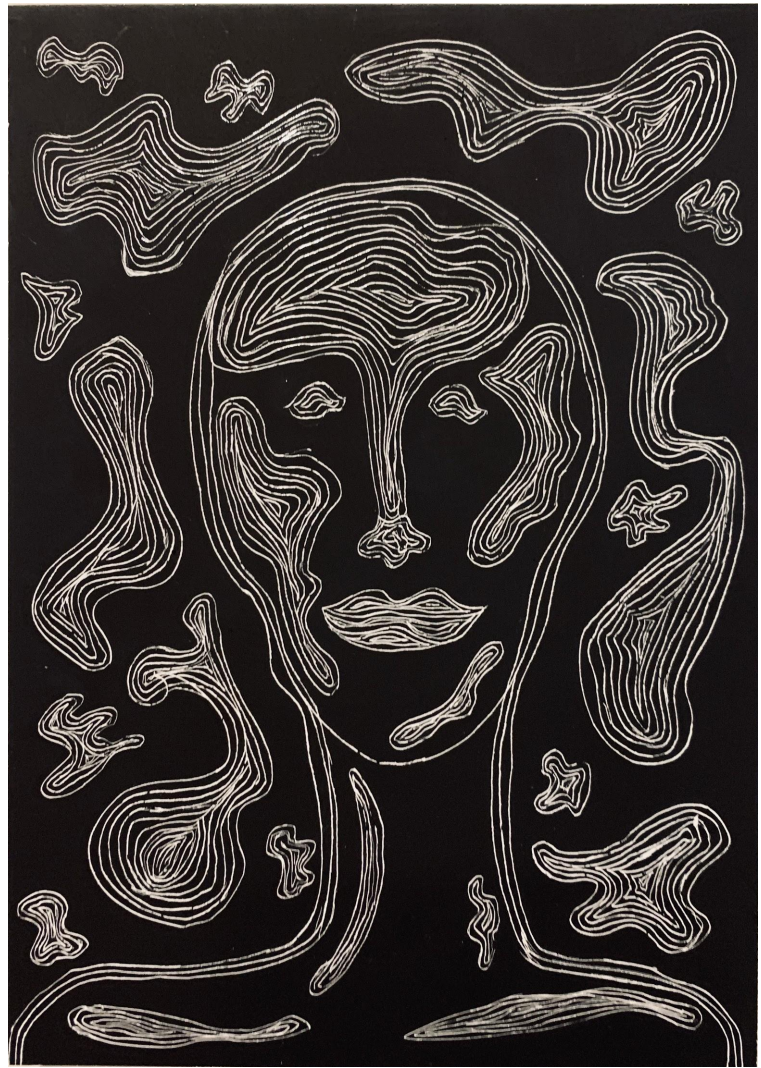
There She Goes

The La's

Scratchboard

5x7

When I hear the lyrics “there she goes again, racing through my brain, and I just can’t contain this feeling that remains,” I just think of this one time someone described to me what the feeling of euphoria from drugs is like. That person and this song inspired this scratchboard drawing.



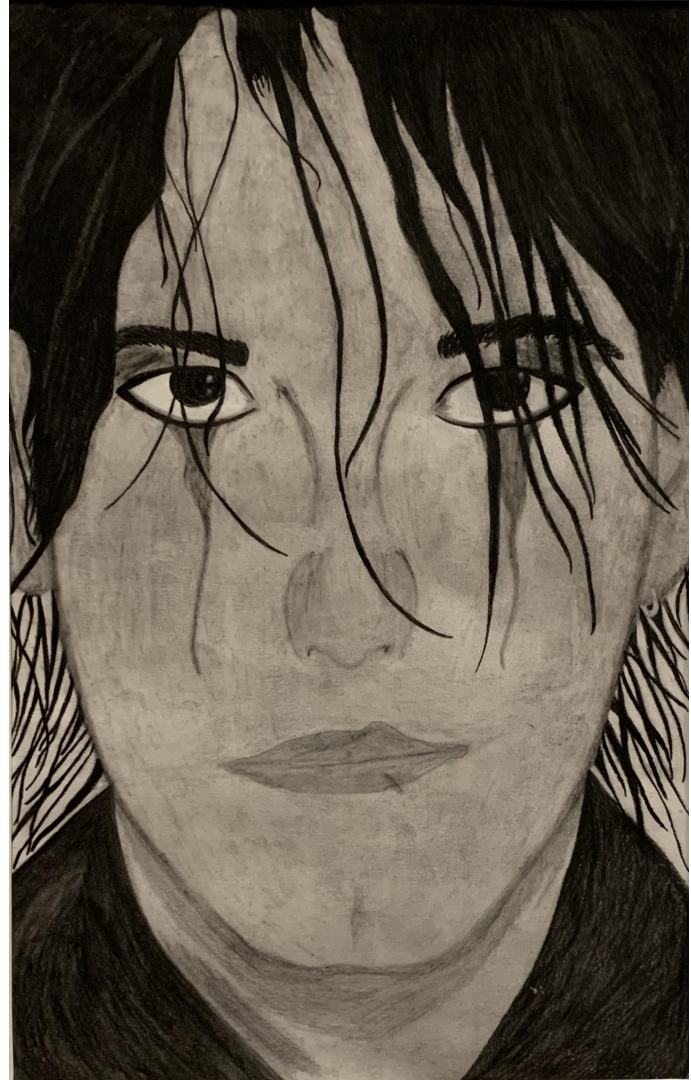
Boys Don't Cry

The Cure

Charcoal and graphite on paper

12x18

This song is satire at its finest. Boys totally cry, but society has this idea that they aren't supposed to. They are supposed to swallow their pride and move on, but the lyrics "I tried to laugh about it hiding the tears in my eyes 'cause boys don't cry" point of the toxicity of that statement.



Fade Into You

Mazzy Star

Scratchboard

5x7

Everyone's favorite Mazzy Star song describes a feeling of longing for something that cannot happen. She has a different idea of the love than her lover does. The lips fade into the illusionistic background, like how she fades into the illusion or idealization of the love that she wants.



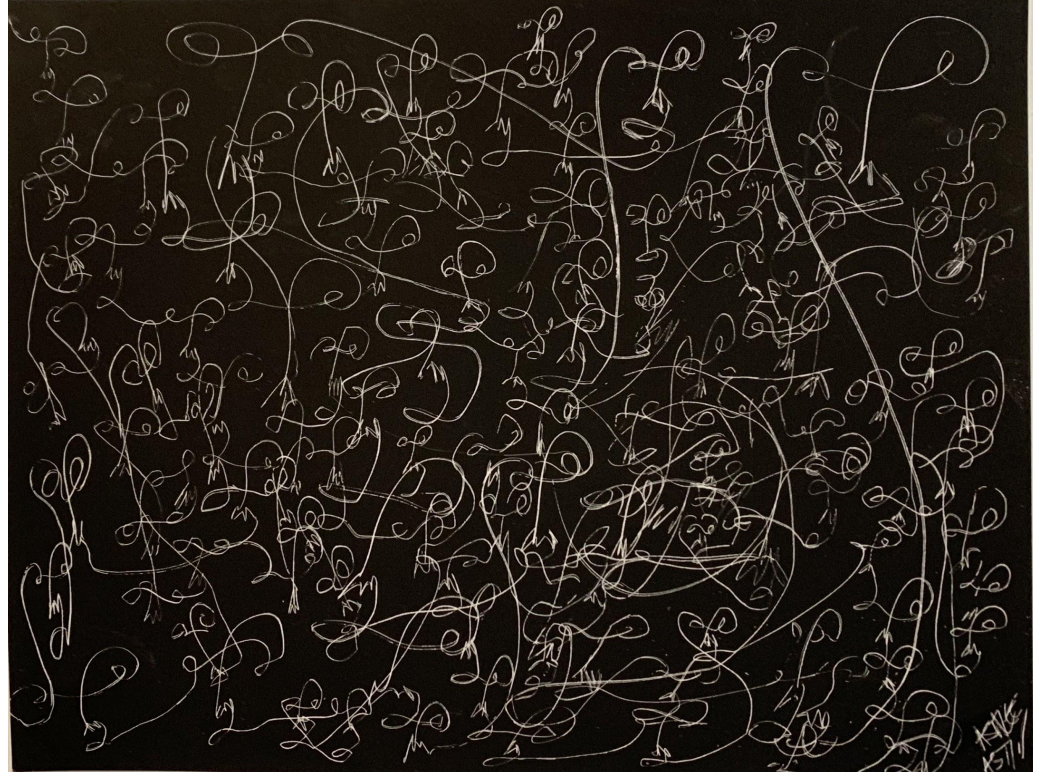
Mad World

Tears for Fears

Scratchboard

8.5x11

Routine is often depressing, and I used this idea of routine for this drawing. “Mad World” is a song written about a person who feels depressed with the routine of the world. All of the faces in this drawing have the same expression, and they seem to be running in circles.



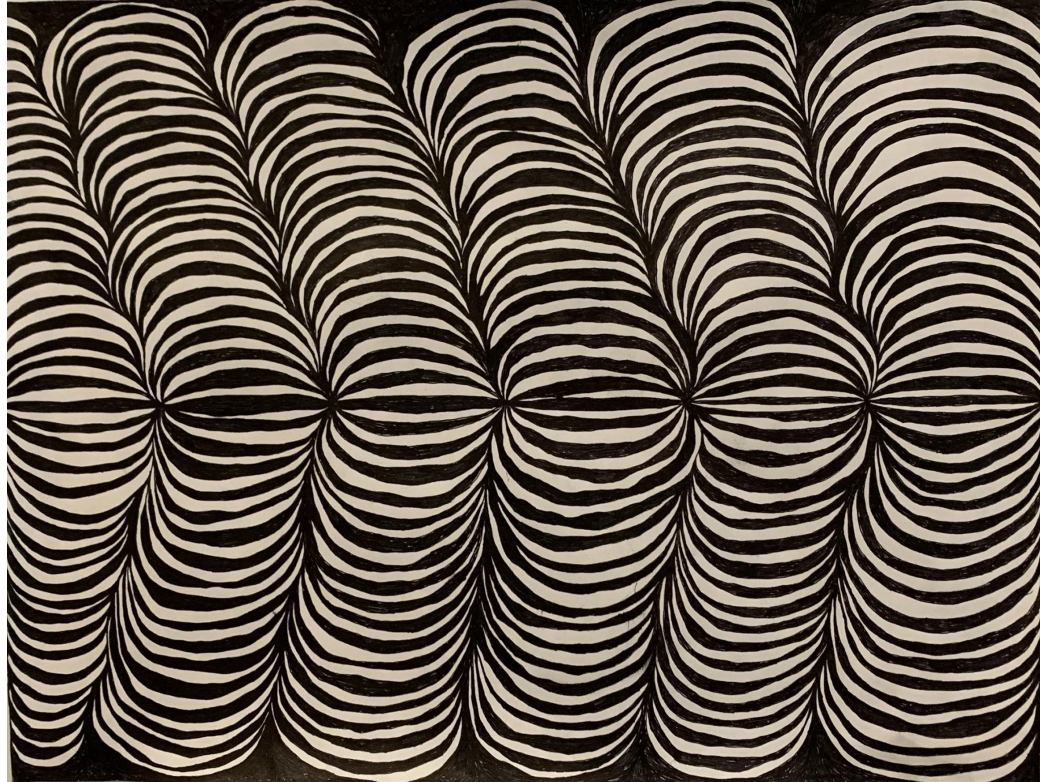
Road to Nowhere

Talking Heads

Ink on paper

9x12

I wanted to contrast the black and white to reference the contrast between the upbeat melody of this song and how dark the lyrics actually are. We don't actually know where we are going in life because the future is uncertain, so it just feels like an endless road to nowhere.



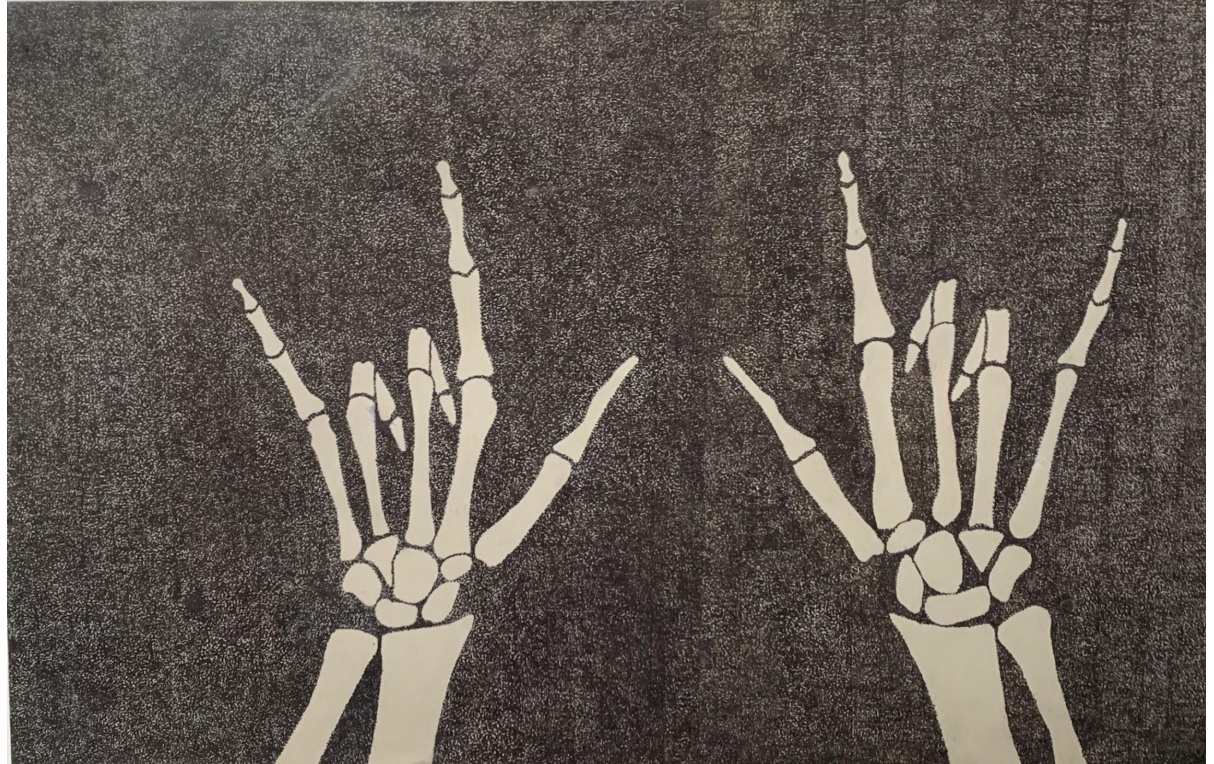
Static Space Lover

Foster the People

Ink on paper

11x17

This song is about a love that remains static, but neither person in the relationship wants to let go. Their love seems dead, but they still love each other, so I chose to draw two skeletal hands saying “I love you” in sign language.



After Hours

The Velvet Underground

White charcoal and graphite on
cardboard

11x8.5

I took inspiration for this drawing from the lyrics “people look well in the dark.” The two silhouettes are just two people having a nice time in the dark, not worried about physical appearance and not wanting this nice moment to end.



I Wanna Be Adored

The Stone Roses

Ink on paper

12x18

The piano introduction of this song sounds like how I imagine swirls sounding like, which is why swirls are what make up the composition of this drawing. The lyrics are written by someone longing for adoration. The hands in this drawing are not touching because of this longing.

