

When I started, my main focus was on the question “How can I convey the effects of winter on the landscape and animals that live in cold ecosystems with watercolor?” but as I worked at it, more questions developed and added to it to include the questions “How can I tie in more color into my paintings so it’s not as monotone?” and “How can I add a sense of movement and life to a still painting?”

As I have worked at and developed these paintings with these questions in mind, it has transformed from not only paintings of snow and nature, like in the painting of the mountains, but the colorful and vibrant essence of one of my favorite seasons that isn’t looked at or thought of at the first mention of winter, like the colorful playfulness the painting of the penguin. Painting winter has taught me not only about the depth and light of snow but the color and shadows that can be brought out in comparison, which is shown best in my painting of the deer in the snow. My ideas became more refined as I found more questions because it led me to focus more on the color and sense of movement that I wanted to bring out in my work. I started adding in more colors with the red bird, cabin, and polar bear as well as movement with the northern lights and the ice skater.



AP Studio Art Portfolio

Emma Crump

Pine Branch

The size of this painting is 7 ½ in by 8 ½ in.

It is watercolor with acrylic splash on top.

NFS

This painting is a fragment of winter that is beautiful in its' simplicity, which is why I chose it to start.



Mountains

The size of this painting is 6 in. by 8 in.

I used watercolor with a splattered acrylic paint on top.

NFS

This is painted from a picture I took while skiing. Skiing has been a big part of my life ever since I was little and was a big influence on why I chose this theme for my portfolio.



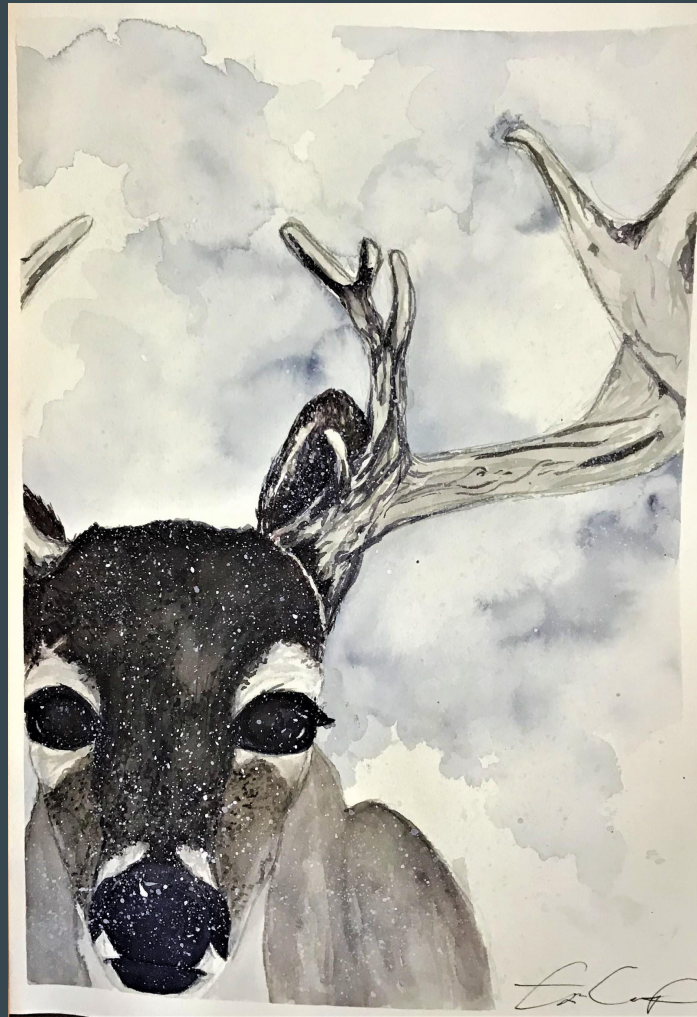
Hazy Deer

The size of this painting is 12 in.
by 18 in.

I painted it in watercolor and
splattered acrylic on top.

NFS

It was fun to paint this piece
because I had to get used to
painting a new perspective and
adding depth into the eyes.



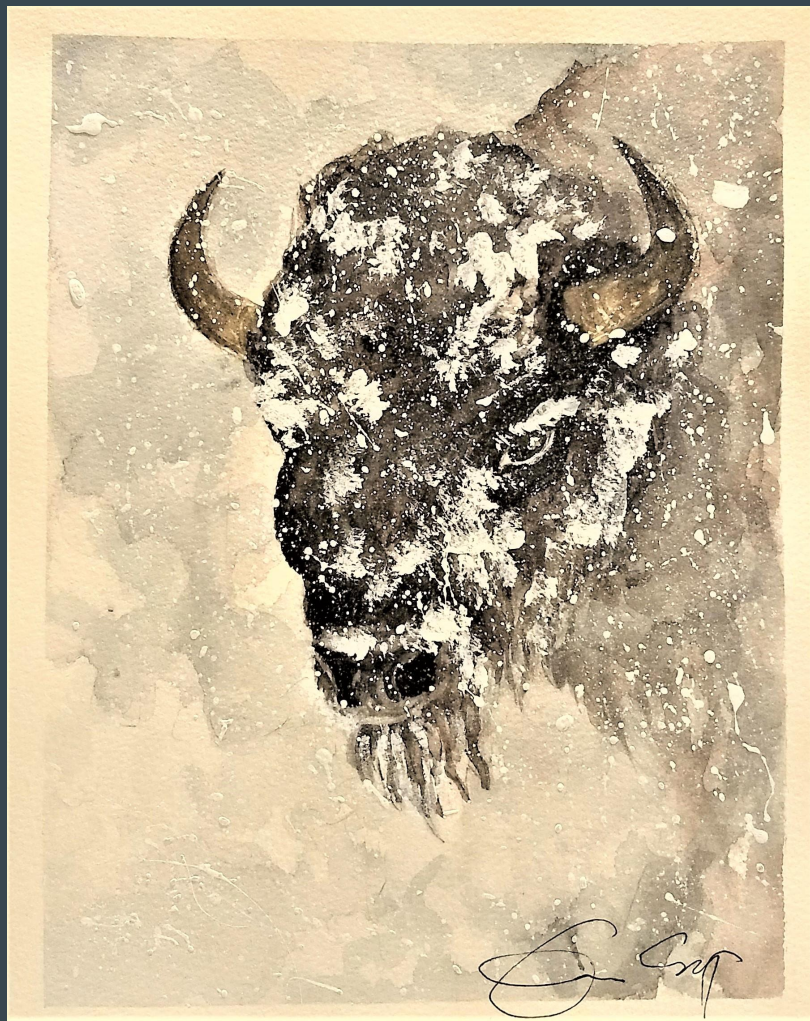
Frosty Bison

The size of this painting is 8 in. by 10 in.

It is painted in watercolor with acrylic paint splattered on top.

NFS

Bison have always reminded me of winter. I am not sure where the association started, but it just made sense to me growing up. They endure through the tough winter months, which is much of sparked the inspiration for this painting.



Aurora Borealis

The size of this painting is 18 in. by 26 in.

It is a watercolor painting with acrylic paint splattered on the sky and used to paint the Aurora Borealis.

NFS

It has always been a dream of mine to see the Northern Lights in person. I have yet to witness them but this painting has deepened my yearning to go on this adventure.



Skate Spray

The size of this painting is 11 in. by 8 in.

I used watercolor with a splattered acrylic.

NFS

Ice skating is one of my favorite sports to watch during the winter Olympics because of the beauty of it. The movement that can be captured in a single photo is intriguing.



Foxy

The size of this painting is 12 in. by 9 in.

I painted this in watercolor and splattered acrylic over the finished painting.

NFS

This painting was fun to play with the balance of lights and darks of the winter landscape.



Windy Horse

The size of this painting is 12 in.
by 8 ½ in.

I painted it with watercolors and
sprayed acrylic over the finished
painting.

NFS

As a little girl I loved horses, and
although they aren't traditionally
thought of as winter animals, I
liked adding in something
different to get a new
perspective.



Red A-Frame

The size of this painting is 12 in. by 9 in.

This is a watercolor painting with an acrylic splash over the top.

NFS

Cabins in the woods always come to mind when I think of winter. To make it stand out, I used red to contrast the greens and blues of the trees and snow, which is where the first sparks of adding in the contrast and playfulness of color in my sustained investigation.



Water's Edge

The size of this painting is 18 in. by 12 in.

This is a watercolor painting with splattered acrylic over the finished painting.

NFS

My little brother had a love for polar bears when he was younger. The inspiration for this painting came from that memory of him.



Deep Set Winter

The size of this painting is 12 in. by 9 in.

I painted it in watercolor and splattered the top with acrylic paint.

NFS

I wanted to play more with reflections and color, so painting a winter scene came naturally. It is hard to get over the beauty of the natural, harsh winter.



Birdy

The size of this painting is 9 in. by 12 in.

It is painted with watercolor and splattered with acrylic paint.

NFS

Most birds migrate South for the winter. The few that stay are among the toughest out there. The contrast between the bird and the branches is what inspired me to paint this picture.



Emperor

The size of this painting is 5 in. by 7 in.

It is painted with watercolors and splattered with acrylic.

NFS

Penguins are one of the first animals thought of when winter is mentioned. Emperor Penguins are my favorite kind because of how beautiful they look. I don't often think of blues and yellows that are the undertones of penguins, but I enjoyed painting those colors in.

