

My investigation displays various settings one would find in New England towns. I grew up in a small college town in New Hampshire, so I have a deep appreciation for the history and natural beauty of Northeastern America. I focused on visually explaining, *what draws people to New England?* Each piece depicts a different time of year, as I believe each part of small towns shine in unique ways each season. I hope to show, *how do the seasons bring out specific beauties in our environment?*

At first, I focused on simple charms, like architecture and mundane items. As my style developed, I realized there was more to New England beauty than material aesthetics. For each season, I was drawn to color palettes beyond the basics. I began experimenting with colors by #2: a neighborhood in late fall. I was drawn to deep purples, yellows, and ashy whites. With layered, blended colors, I created the sense that November air has its own unique smell. Emboldened, I revised older works, adding new colors. I became more sensitive to textures and interactions between subjects, like the sheen of wet road under a car in #8. By celebrating its charm, I hope to convey why people love to live in New England.

# Halloween Night

6.5 x 9.5 inches

Matte board and colored pencil

NFS

This piece is loosely based on a neighborhood next to the local grocery store of my hometown, Hanover, New Hampshire.



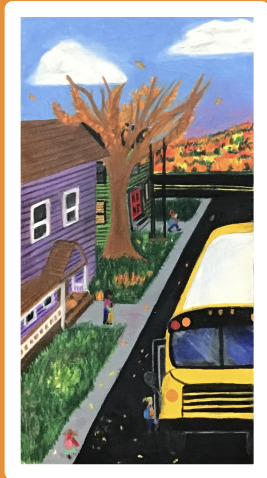
# The Phases of Autumn

17.5 x 9.5 inches

Matte board and colored pencil

NFS

The first panel depicts crisp early September when school on the east coast is just beginning, the second depicts October when the temperature drops and the leaves are almost gone, and the third depicts late November, when family is home for Thanksgiving and the air smells like snow.



# Smoky November

6.5 x 10.5 inches

Matte board and colored pencil

NFS

This piece is a further exploration of the color pallet in the November section of “Phases of Autumn,” with many purples, yellows, and grays. The church on the hillside was inspired by churches I see on the mountainsides of Utah (where I live now) that remind me of the Hudson River Valley in New York.



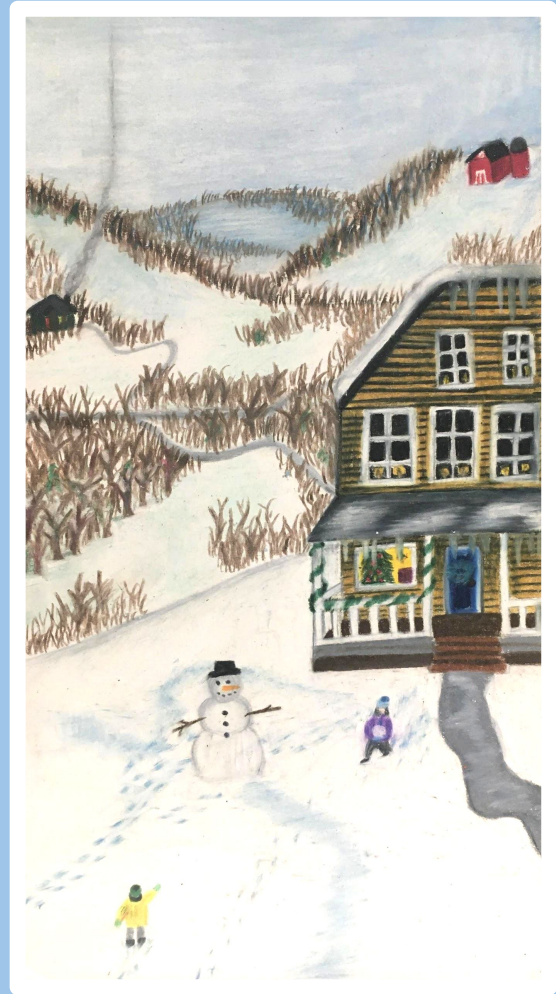
# Winter Hill

5.75 x 10.5 inches

Matte board and colored pencil

NFS

The setting of this piece is an ode to the lovely snowy woodland car ride my brother, sister, and I would take to Vermont every week for chamber music lessons in the winter.



# The Rolling Hills

1.5 feet x 10.5 inches

Matte board and colored pencil

NFS

My piano lessons were in Vermont, just a short drive across the Connecticut River, where I got my inspiration for this triptych. The hills that rose around my teachers' house had a lot of farmland, which I made sure to include.



# Autumn on Main Street

9.5 x 6 inches

Matte board and colored pencil

NFS

I wanted to capture the charm of New England architecture and style when it comes to shops and bakeries, so I created a set of stores that embody the classic small town Main Street.



# Late July

7.5 x 6 inches

Matte board and colored pencil

NFS

The hot summer streets of town, though unpleasant to walk through when it's high noon and 90 degrees out, make up for the discomfort with the vibrance of the buildings and refreshing greens of flowers and trees. Summertime in town was a prominent part of my life in New Hampshire, so I made sure to include July in my concentration.





# Yuletide

7.75 x 6 inches

Matte board and colored pencil

NFS

I placed the hilltop of this piece in a prominent position because in rural towns, like the one I lived in, the softly rising hills served as a constant reminder of the presence of nature and complimented the coziness of warm light and the closeness of loved ones.



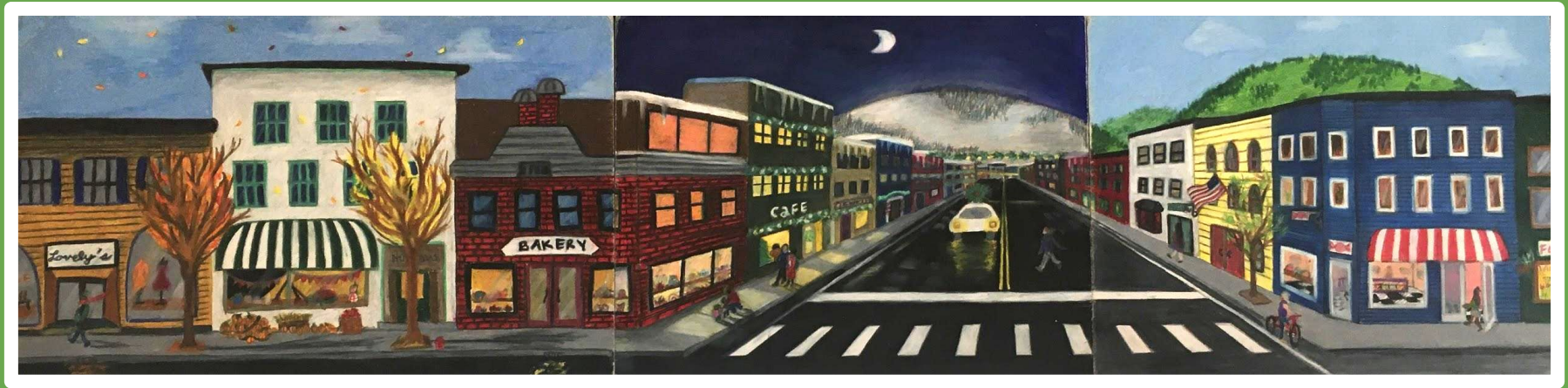
# Downtown

2 feet x 6 inches

Matte board and colored pencil

NFS

The collective display of the downtown shops shows the diversity of New England buildings when it comes to height, color, and window shape. The combination of styles really brings out the beauty of age in the Northeast.



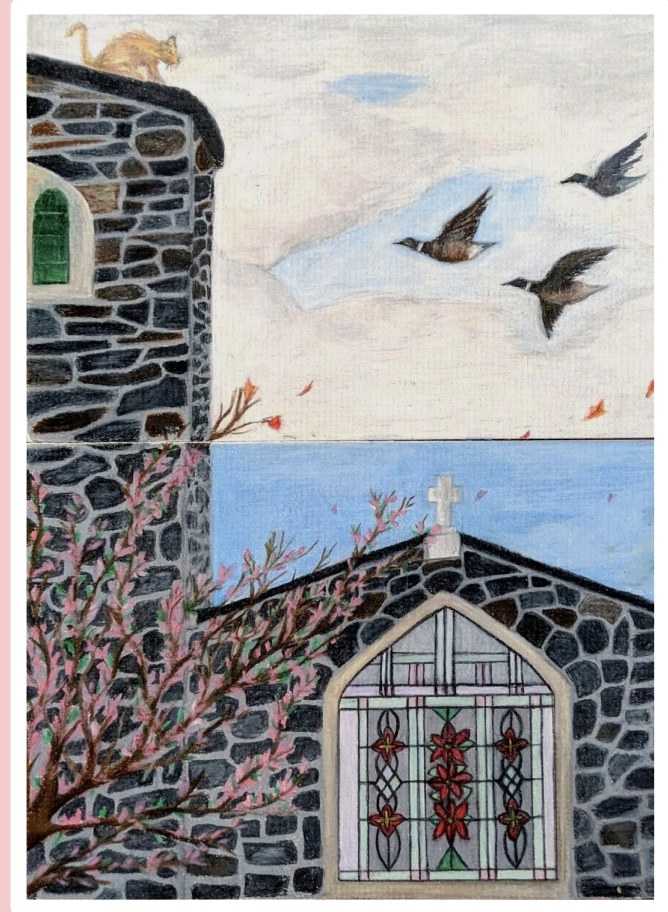
# The Cathedral

9 x 11.5 inches

Matte board and colored pencil

NFS

The structure of the cathedral in this piece is based on a Catholic church in New Hampshire I attended once for my good friend's Holy Communion when I was eight years old.



# Berry Road

7 x 5 inches

Matte board and colored pencil

NFS

This is a typical house one would pass when driving through eastern Maine. Houses like this always sparked my imagination as a little kid. The charm found in the pastel paint and the towel hanging from the clothesline shows the simplicity and loveliness of living in Northeastern countryside. The field represented beyond the house would typically contain blueberries and blackberries in midsummer.



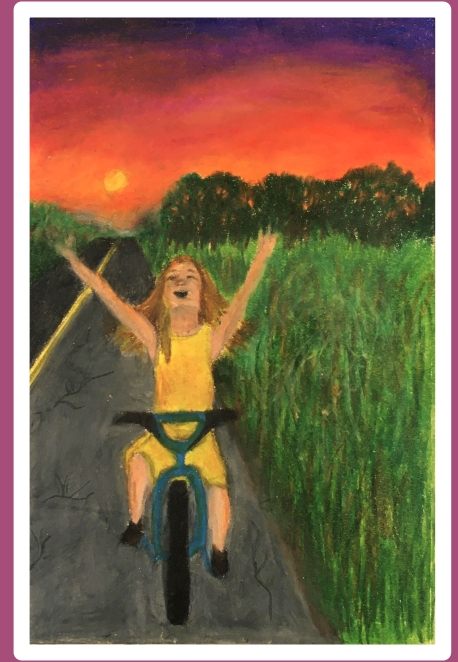
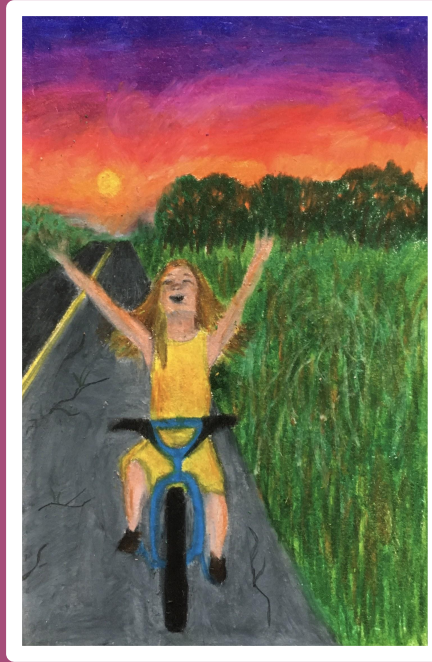
# Sunset Bike Ride

3.25 x 5 inches

Matte board and colored pencil

NFS

In this piece, I focused in the lively happiness the natural beauties of New England countryside spark in my own heart. Biking in the evening in a place like Maine or New Hampshire is a magical experience, as the wheels outrun the mosquitos that come with nighttime and the wind rushes by, smelling of flowers.



# Glowing Summer

10.25 x 5 inches

Matte board and colored pencil

NFS

This final piece highlights the welcoming nature of New England. What you see is what you get, in places like Maine or Hanover. The vitality of the Northeast shines in this piece through the healthy coloring of the grass, the sky, and the biker.

