
Ondraya Waters

Sustained Investigation

- ❖ “Can color and nature evoke a sense of femininity?” I found this idea fascinating, because there are usually stereotypes that encompass certain colors and pieces of nature (take Georgia O’Keefe and her flowers for example) to the idea of women and being feminine. Another question I took into consideration was: “Is there a medium that seems more feminine than others?” I experimented with oil, acrylic, colored pencil, marker, and mixed media. Different techniques within these mediums can create a piece that is smooth, choppy, and such. It’s interesting to see that even texture can give off a sense of femininity. A man can be just as feminine as a woman, but there are certain characteristics people use to justify that. In my situation, it’s nature and color.
 - ❖ I had to really experiment with color and creating different color palettes that all seemed feminine. With certain mediums, it was difficult to create certain colors. In “Silence”, I brushed over marker strokes with water to create the girl’s face. The way some of the colors blended was unexpected and needed a lot of revision to achieve the desired color. I had to experiment with multiple different mediums and techniques to create diverse pieces that could be compared to each other by texture. I had never used oil before this concentration and lots of the mixed media techniques were out of my comfort zone. For example, “Morning Indulgences” felt more feminine, because I used really smooth strokes and blending with oil and used more soft, pastel colors. In comparison to “Vulnerability,” where I used more harsh lines and vibrant, darker colors.
-

Split

12" x 9"

Oil

This is based on a photo of me holding oranges above my uncle's pool. I think the way oranges show translucence in the skin can really symbolize the insides of a person and being vulnerable. I also tried to show a clear depiction of warm and cool tones through contrast.



Morning Indulgences

12" x 9"

Oil

This is a painting of some pastries with berries and flowers. I wanted it to look like a spring picnic with lots of texture, warmth, and peacefulness.



Don't Blink

7" x 6"

Colored Pencil

A ladybug landed on my eyelash at a park once. I wanted to show the gentleness of the ladybug and have a clear connection between it and myself, while also depicting the color palette of the skin.

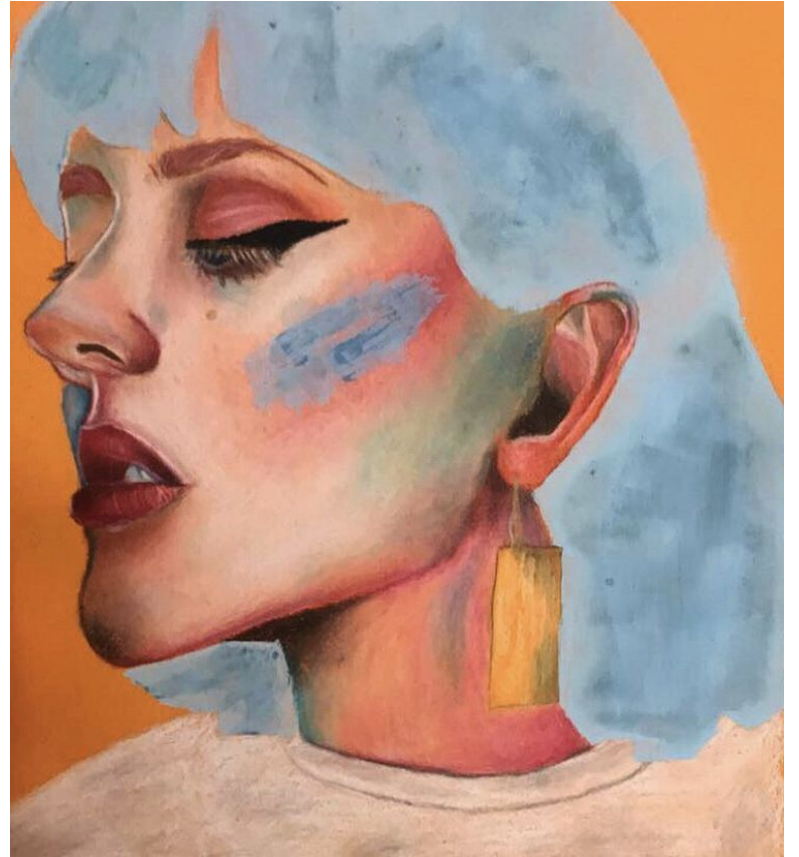


Self-Portrait

10.5" x 11"

Colored pencil & acrylic

I wanted to show the warm and cool tones that can be found on a person's skin. To show contrast and more focus on the face, I kept a plain warm background and a smooth blue for the hair.

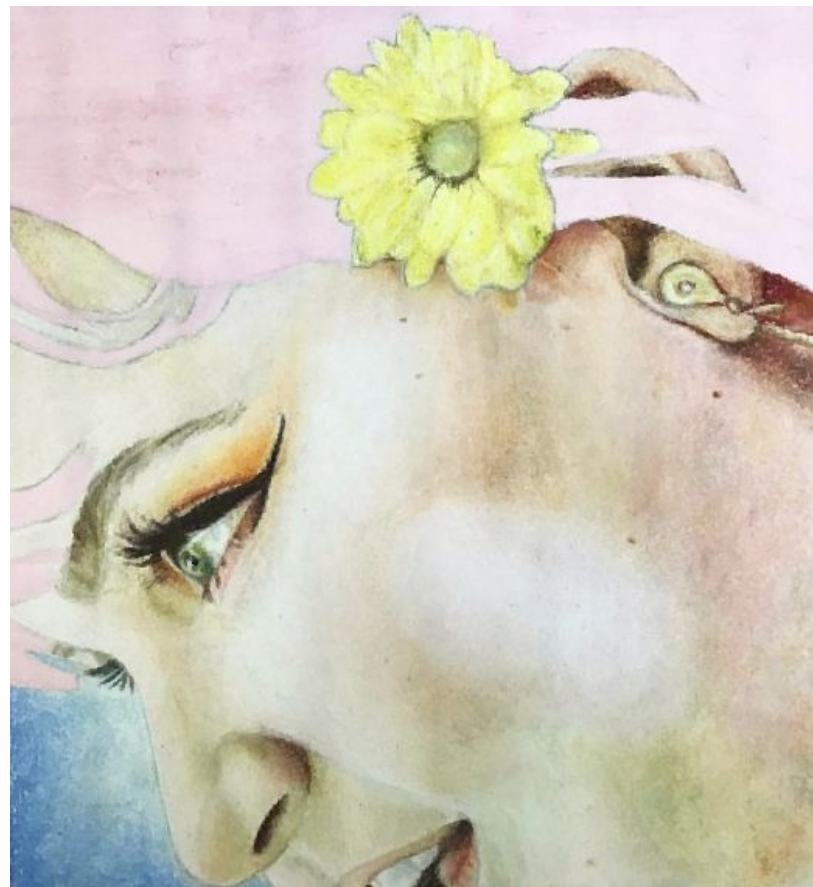


Ivy

10.5" x 11"

Colored Pencil

This is a photo I took of my friend at a festival. She had sunlight reflecting off of her warm pale skin, a flower in her pink hair, and a very clear gentleness in her eyes. Would you consider these components to be feminine?



Silence

12" x 9"

Acrylic and paper

The butterfly of black and white represents two sides of beauty (masculinity & femininity). All the colors on the girl are different aspects of personality being blocked by the gender roles.



Vulnerability

9" x 12"

Colored pencil, acrylic, & collage

I love bees and think they are one of the most beautiful things in the world. They are such a bigger part of the planet than we think. When a bee crawls on me, I consider it's because they think I'm a flower. The harsh background is supposed to resemble the stigma around bees, as well as masculinity.



Seeing Double

9" x 10"

Colored Pencil & collage

Having both a man and woman covered in flowers with warm smooth skin to me shows androgyny. The girl and her two sets of eyes symbolize both the feminine and masculine aspects you could take away from this piece.



Beauty Encapsulation

8.5" x 9.5"

Marker, acrylic, & collage

This piece not only focuses on the shades on the girls face, but more so the colors and shades we find in nature.



Tulip Festival

12" x 5"

Oil

This is a photo I took at the Tulip Festival in the springtime. The colors of the flowers and clouds are warm while the trees are somewhat cold. I tried to create a very thick and harsh texture to differ from the color aspect.

